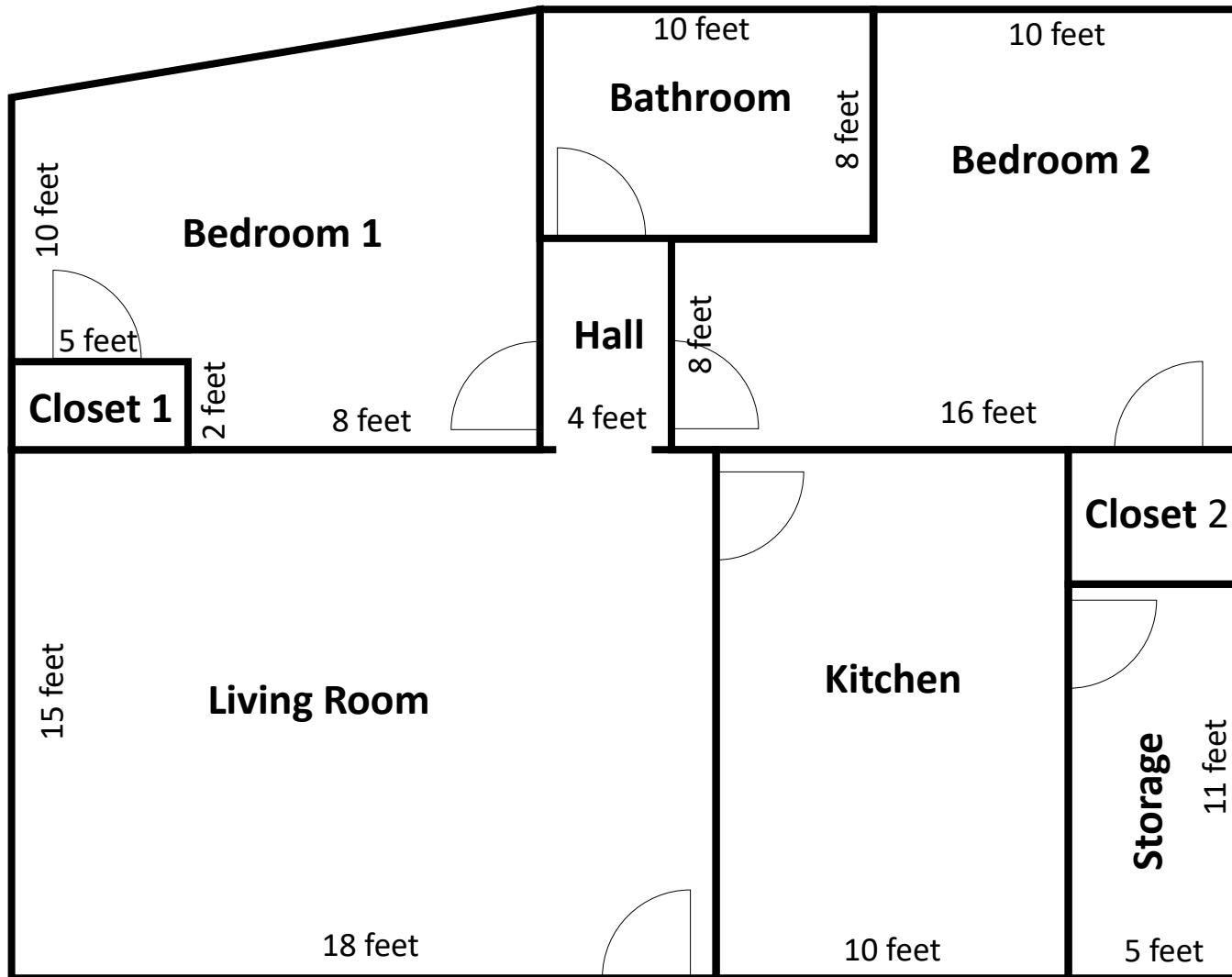
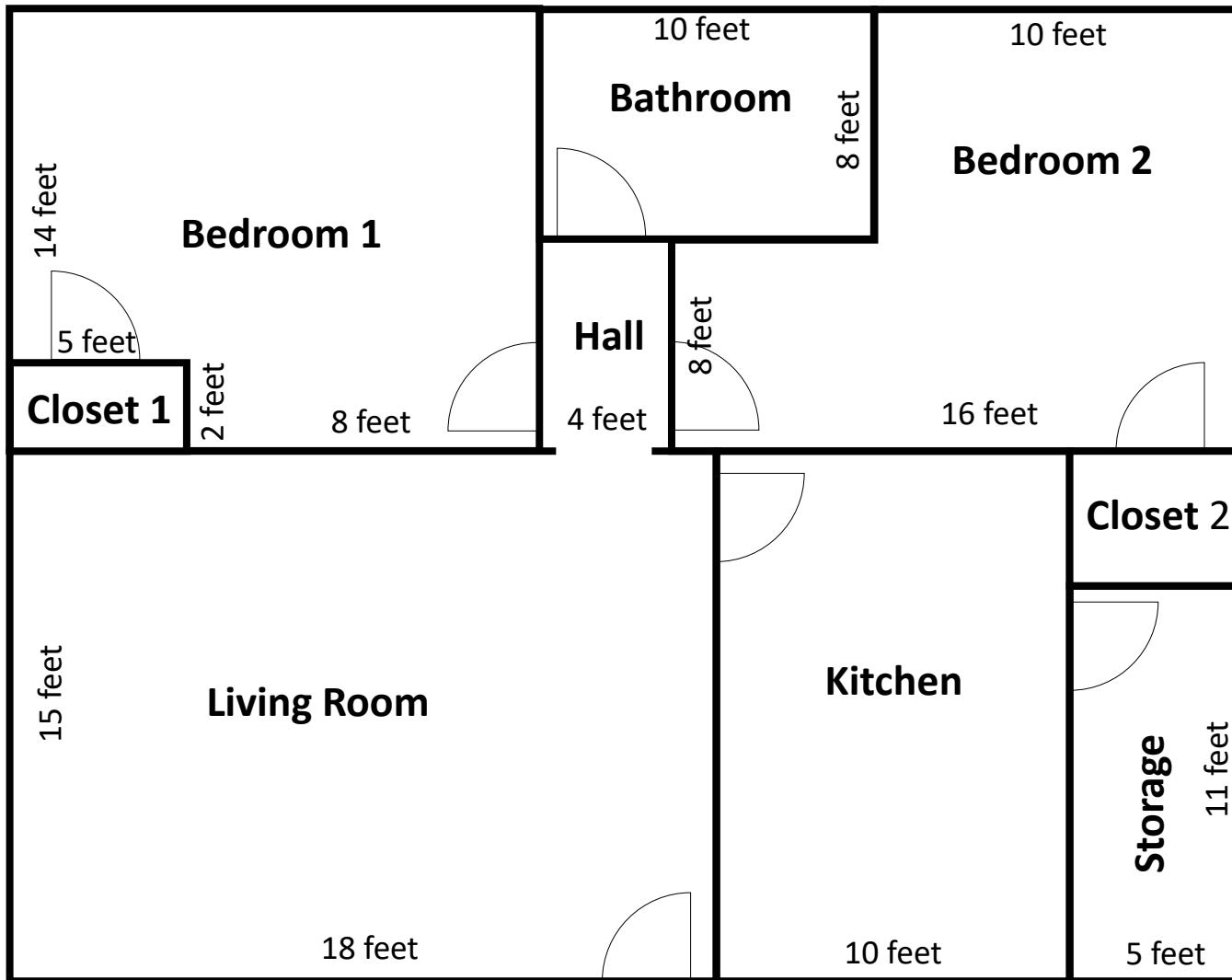


Apartment Floor Plan A



Not to Scale

Apartment Floor Plan B



Not to Scale

Apartment Floor Plan Project

Name _____

Class _____

Date _____

A. Find each room's perimeter:

1. Bedroom 1: _____
2. Bedroom 2: _____
3. Living Room: _____
4. Kitchen: _____
5. Bathroom: _____
6. Storage: _____
7. Closet 1: _____
8. Closet 2: _____
9. Hall: _____

B. Find each room's area:

1. Bedroom 1: _____
2. Bedroom 2: _____
3. Living Room: _____
4. Kitchen: _____
5. Bathroom: _____
6. Storage: _____
7. Closet 1: _____
8. Closet 2: _____
9. Hall: _____

C. What is the perimeter of the entire apartment?

D. What is the area of the entire apartment?

E. When calculating how much flooring you need to purchase, would you use perimeter or area? Explain your choice.

F. When calculating how much paint you need to purchase, would you use perimeter or area? Explain your choice?

G. Would you choose to have Bedroom 1 or Bedroom 2? Why?

Apartment Design Project Extension

Today you will be an architect. You are designing an apartment to attract buyers. Here are some things you should keep in mind:

- To be efficient, you will need just 1 apartment design, which will be duplicated throughout the building.
- The apartment should be between 600 and 800 square feet.
- The apartment should have a rectangular perimeter (so a row of units can fit tight together).
- The apartment should have the following rooms:
 - Bedroom with closet (120+ sf)
 - Bathroom (40+ sf)
 - Living Room (150+ sf)
 - Kitchen (80+ sf)
 - Laundry closet/room (20+ sf)
 - You may add additional rooms
- To be edgy, you will include one or more angled walls in your design.

Use graph paper to design one apartment. Each square represents a square foot. Hint: Draw the perimeter first to make sure it is rectangular and within the area requirements.

After you have drawn your apartment, on a separate sheet of paper:

- Calculate the area of each room.
- Calculate the perimeter of each room.

Scoring Rubric

Below Basic	Basic	Proficient	Advanced
1 out of 4	2 out of 4	3 out of 4	<ul style="list-style-type: none">• Included necessary rooms• Met square footage requirements• Correctly calculated areas of rooms• Correctly calculated perimeters of rooms